

# The Dockside



ELEVATION 'A'

**1650 SQ.FT.**

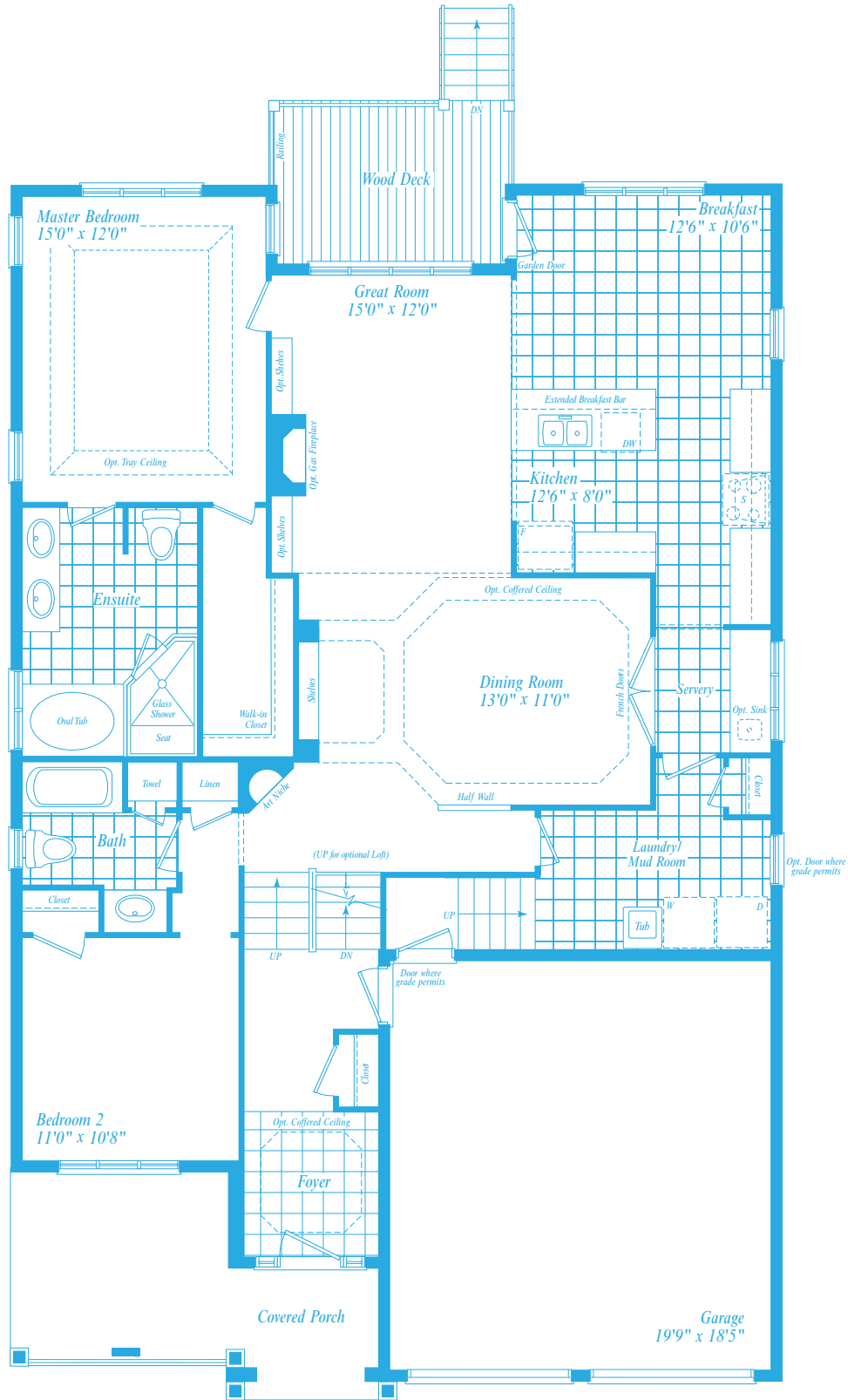
2100 SQ.FT. WITH OPT. LOFT



ELEVATION 'B'

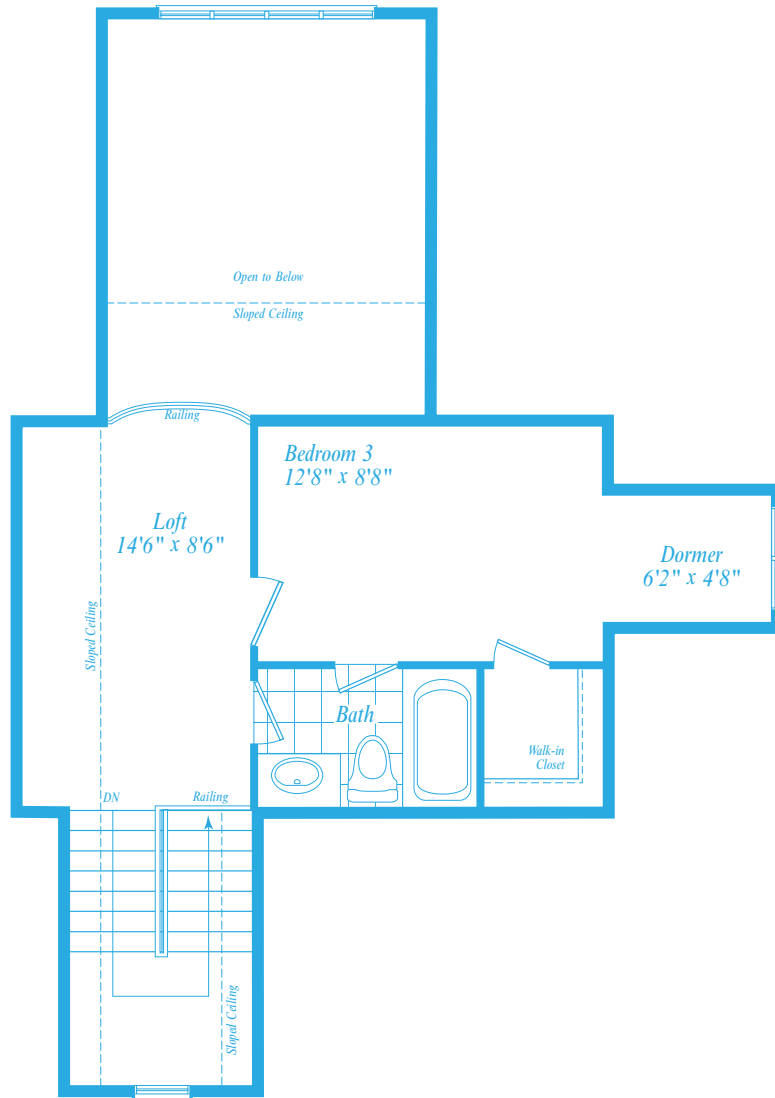
**1650 SQ.FT.**

2100 SQ.FT. WITH OPT. LOFT



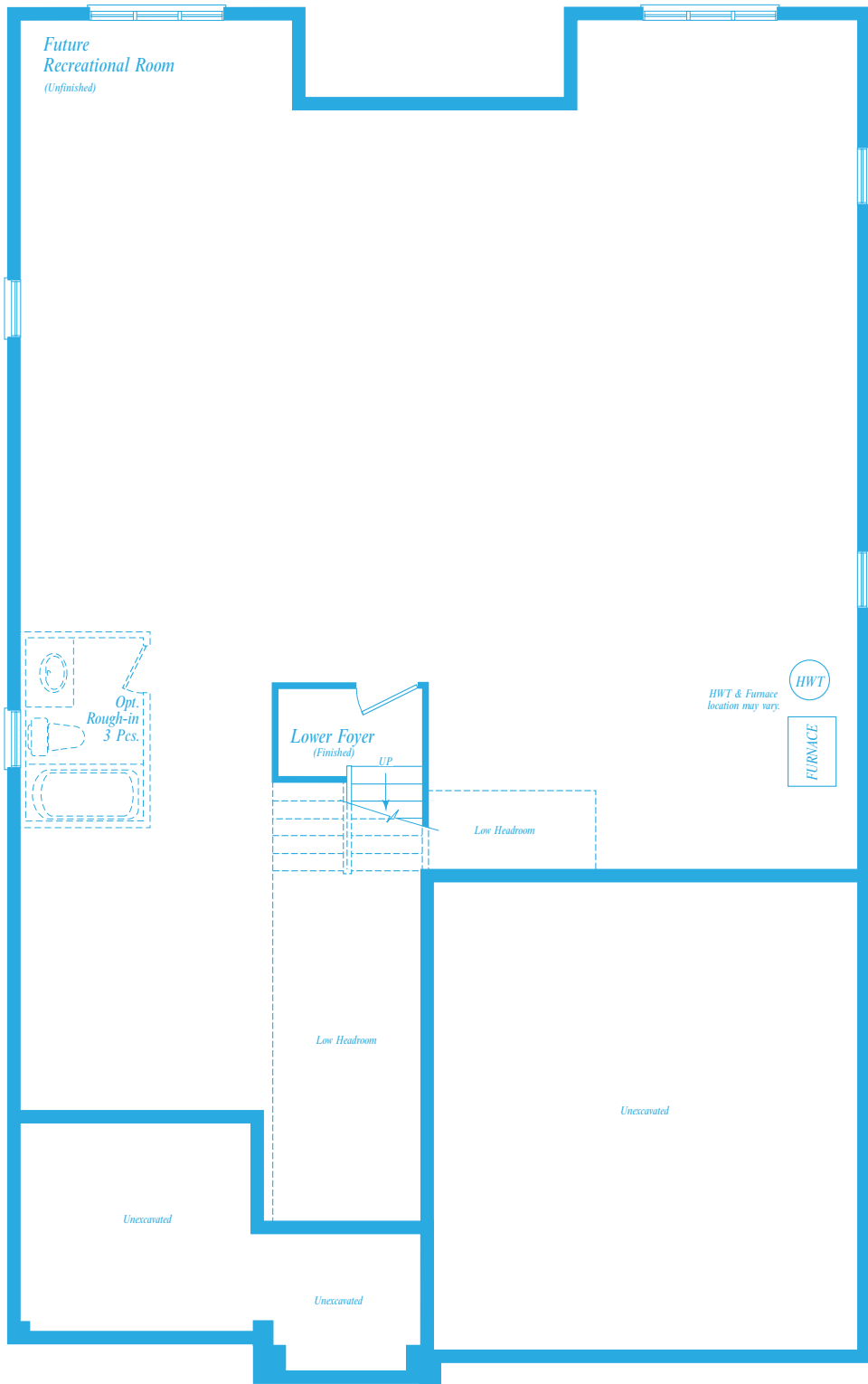
**THE DOCKSIDE - MAIN FLOOR ELEVATION 'A'**

ORIENTATION OF HOME MAY BE REVERSED. NUMBER OF STEPS MAY VARY AT ANY ENTRANCEWAY DUE TO GRADING VARIANCE. ACTUAL USABLE FLOOR SPACE MAY VARY FROM STATED AREA. DIMENSIONS, SPECIFICATIONS AND ARCHITECTURAL DETAILING ARE SUBJECT TO MINOR MODIFICATIONS. STRUCTURAL POSTS ARE NOT SHOWN IN LOWER LEVEL PLANS. FINISHED AREA IN LOWER LEVEL (IF ANY) IS INCLUDED IN QUOTED SQUARE FOOTAGE. ALL RENDERINGS ARE ARTIST'S CONCEPT. E. & O. E.



### THE DOCKSIDE - OPTIONAL LOFT ELEVATION 'A'

ORIENTATION OF HOME MAY BE REVERSED. NUMBER OF STEPS MAY VARY AT ANY ENTRANCEWAY DUE TO GRADING VARIANCE. ACTUAL USABLE FLOOR SPACE MAY VARY FROM STATED AREA. DIMENSIONS, SPECIFICATIONS AND ARCHITECTURAL DETAILING ARE SUBJECT TO MINOR MODIFICATIONS. STRUCTURAL POSTS ARE NOT SHOWN IN LOWER LEVEL PLANS. FINISHED AREA IN LOWER LEVEL (IF ANY) IS INCLUDED IN QUOTED SQUARE FOOTAGE. ALL RENDERINGS ARE ARTIST'S CONCEPT. E. & O. E.



### THE DOCKSIDE - LOWER LEVEL ELEVATION 'A'

ORIENTATION OF HOME MAY BE REVERSED. NUMBER OF STEPS MAY VARY AT ANY ENTRANCEWAY DUE TO GRADING VARIANCE. ACTUAL USABLE FLOOR SPACE MAY VARY FROM STATED AREA. DIMENSIONS, SPECIFICATIONS AND ARCHITECTURAL DETAILING ARE SUBJECT TO MINOR MODIFICATIONS. STRUCTURAL POSTS ARE NOT SHOWN IN LOWER LEVEL PLANS. FINISHED AREA IN LOWER LEVEL (IF ANY) IS INCLUDED IN QUOTED SQUARE FOOTAGE. ALL RENDERINGS ARE ARTIST'S CONCEPT. E. & O. E.